



Welcome to Appletree Gardens First School

Tel: 0191 252 3546
Monkseaton, Whitley Bay, Tyne and Wear, NE25 8XS



Year Three

Meet the Year Three Team

Teachers



- Mrs Hyde & Ms Johnson – Class 7



Miss McAvelia – Class 8

Teaching Assistants



Mrs Burrough & Mrs Morris

Year Three

Year 3 is a special year group where the children will be inquisitive, independent and creative learners! The children will continue their learning journey from Early years, Key Stage 1 and will now 'Grow Their Learning' into Key Stage 2.



At the end of Year 3 we aspire for the children to be the best version of themselves, build resilience and confidence and enjoy suitable challenges.

This can be achieved through a variety of different exciting opportunities in and out of the classroom, including - Ukulele, swimming, Bike for Health and a number of sporting competitions and festivals.



Our Curriculum



I have opportunities: Forest school - making rafts - sink or float investigation





Year 3 Long Term Plan

At the moment our topics for Year 3 are...

Autumn 1 – The Stone Age

Autumn 2 - Space and its Forces

Spring 1 - Ancient Greeks

Spring 2 - Healthy Body

Summer 1- Victorian Britain

Summer 2 – Rivers and Bridges



Grow your Literacy

Our ambition is to equip all learners with the knowledge and skills needed to become independent, fluent, life-long readers who read widely and often.



We are excited to announce that we are in the process of changing our literacy curriculum to encompass planning from 'Literacy Tree'.



We further develop children's confidence and skills in speaking and listening through our Skills Builder sessions.



Grow your Numeracy

We want our children to be confident mathematicians who are able to apply their skills to solve problems, prove responses, learn from their mistakes and show resilience.

	2	3	4	5	6	7	8	9	
2	4	6	8	10	12	14	16	18	2
3	6	9	12	15	18	21	24	27	3
4	8	12	16	20	24	28	32	36	4
5	10	15	20	25	30	35	40	45	5
6	12	18	24	30	36	42	48	54	6
7	14	21	28	35	42	49	56	63	7
8	16	24	32	40	48	56	64	72	8
9	18	27	36	45	54	63	72	81	9
	2	3	4	5	6	7	8	9	

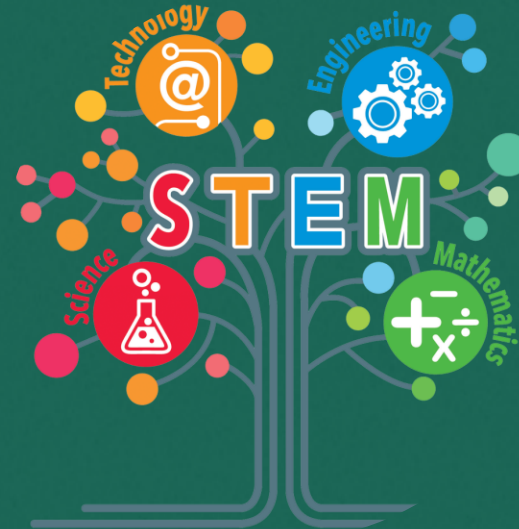


Grow your World



In Year 3 we use scientific enquiry, study religions, develop artistic skills and plan, design and create to bring ideas to reality.

Geography brings the wider world a lot closer and we explore communities from the past.



Grow your World



Clubs

Keep an eye out for different clubs each term from staff, Access Coaching and other external providers . Clubs will be both during and after school.

Blossom Club

Gardening Club

KS2 Choir

Early Bird

Mindfulness

Variety of sports clubs



Grow your Wellbeing

- Blossom code\ BLOSSOM buddies
- Mental Health Registers
- Jigsaw program
- Thrive trained staff and Thrive interventions
- Thrive room\ quiet spaces around school
- Supernanny
- SEND support
- Give me five\ Value assemblies\ Celebration assemblies
- Pupil led theme weeks: odd socks, wellbeing
- Metacognition
- Early Help
- Poverty proofing
- Parent - School communication
- Pupil responsibilities: Eco-warriors, school council, PE leaders

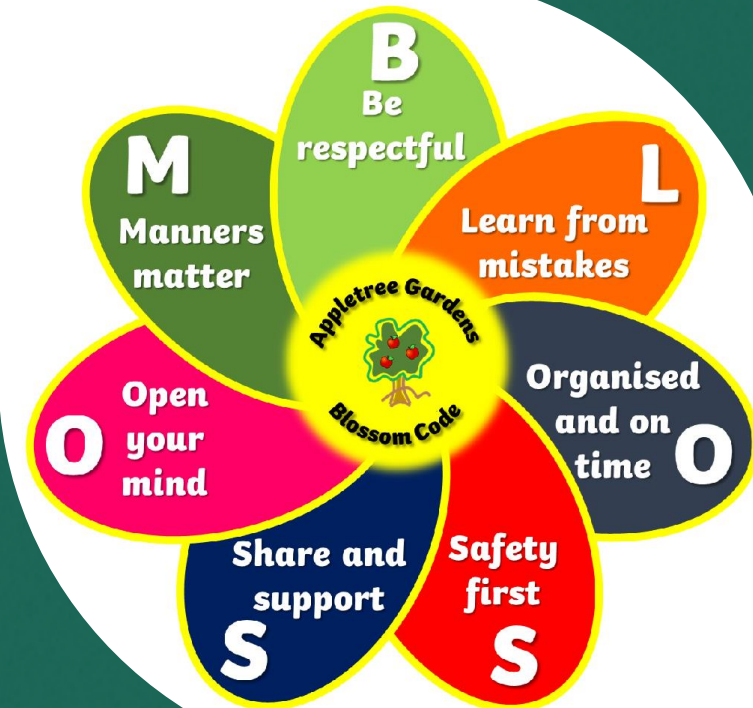


Organised and On Time



DID YOU KNOW? A two week holiday in term time means that the highest attendance you can achieve is 94.7%

Attendance Matters



Homework/organisation



Children will be given two reading books each week. Just as in Year Two children should read aloud to an adult and reads should be logged onto Boom reader. Reading folders should be brought into school each day to allow teaching staff to hear children read and to change books.



In Year Three children will continue to be set weekly homework to complete on Doodle Maths, Times Tables and Spell. Children must also ensure they remain in the green zone to ensure they earn their 'Golden Time'.

PE Days

Class 7 – Mon & Weds
Class 8 - Mon & Weds

How to keep in touch...



Main Office – Always contact the office for absences, early collection, or urgent messages
0191 2523546

A member of staff will be available daily at drop off and pick up for simple enquiries. Call the office for a longer appointment with staff.



ACTIVE APPLETREE ▾

GROW YOUR

How to get involved...



Drop in dates: Autumn 1: Reading, Spring1: Writing, Summer 1: Maths

Assemblies:

Autumn Term- Christmas performance (to be arranged)

Spring Term - Year Group Assembly (to be arranged)

Summer Term - Year Group Assembly (to be arranged)

Supporting on trips

