

GROW your learning at



# Welcome to Nursery



*“From little pips,  
mighty apples  
grow”*



**Head Teacher:  
Mrs Helen Bruce**



**Early Years Lead:  
Mrs Claire Carron**



# Our School Ethos



# I am Happy and Safe

## Keeping Our Children Safe



What should you do if you are worried about the safety or well being of a child at Appletree First School ?



Head teacher: **Helen Bruce**

Keeping children safe is our top priority at Appletree First School. I am the **Designated Safeguarding Lead**. I ensure all staff and volunteers who work in Appletree First School are correctly trained and informed about our policy and procedure to safeguard pupils. I am trained to manage any child protection issue in school and have access to a range of contacts and resources to support this.



Deputy Head teacher: **Jayne Wilkinson**

I am also trained as a **Designated Safeguarding Lead** to manage any child protection issue in school and have access to a range of contacts and resources to support this.



PHSCE lead, Year one teacher: **Deb McGregor** I am also trained as a **Designated Safeguarding Lead** to manage any child protection issue in school and have access to a range of contacts and resources to support this.



SENDCo, intervention lead and class teacher: **Tracey Johnson**

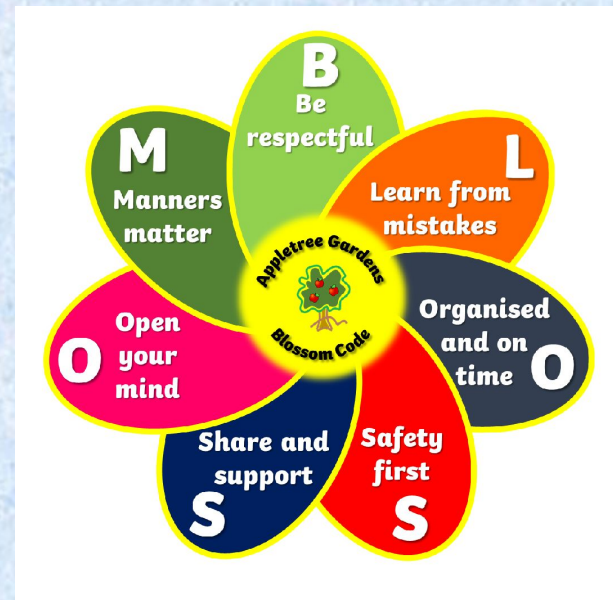
I am also trained as a **Designated Safeguarding Lead** to manage any child protection issue in school and have access to a range of contacts and resources to support this.



SENDCo, Little Pips and Out of School club care: **Susanne Cross**

I am also trained as a **Designated Safeguarding Lead** to manage any child protection issue in school and have access to a range of contacts and resources to support this.

If you have ANY concern regarding child protection or concerns regarding the safety or well being of any child DO NOT hesitate to contact us immediately.



How can parents support?

“Everyone’s responsibility”



# I am healthy

How can parents support?

Personal health  
Snacktime

Supernanny

Physical Health



Circle time

Mental Health

Thrive

# I have a voice

Nativity



# I reach my potential

Bespoke support

SEND support

Tracking and reporting progress



Indoor\ Outdoor curriculum

How can parents support?

# I have opportunities



Forest school

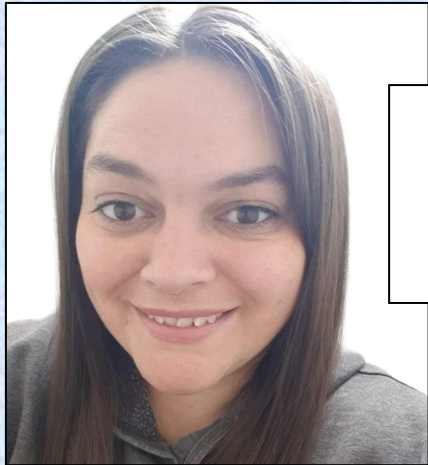
# Meet the Nursery Team...



**Nursery Teacher:**  
Mr Mitch Dent



**Forest School Teacher:**  
Miss Jane Tucker



**Nursery Teaching Assistant:**  
Miss Amy Spratt



**Nursery Teaching Assistant:**  
Mrs Deb Elliott



# Nursery Curriculum

We have worked hard to develop a curriculum that is progressive, inclusive and engaging for all learners. We follow half-termly topics to ignite children's curiosity and enthusiasm for learning. Within our topics we provide a range of well planned, exciting, stimulating and challenging activities, for high quality play, both inside and outside.



## Prime Areas

- Personal, Social and Emotional Development
- Physical Development
- Communication and Language

## Specific Areas

- Literacy
- Mathematics
- Understanding the World
- Expressive Arts and Design

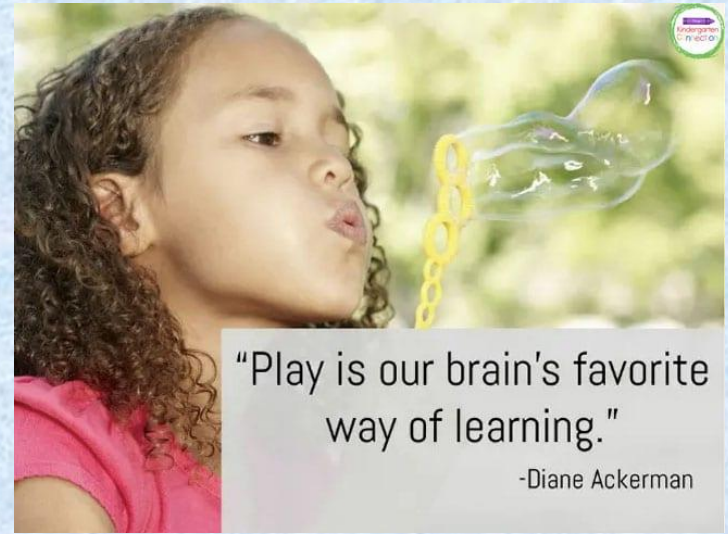


# PLAY... PLAY... and more PLAY!



"Children need the freedom and time to play. Play is not a luxury. Play is a necessity."

-Kay Redfield Jamison



"Play is our brain's favorite way of learning."

-Diane Ackerman



Play is the work of the child.

- Maria Montessori



*Play is the highest form of research-*  
*Albert Einstein*

# TALK... TALK... and more TALK!



## Why early talk matters



### What's the early talk gap?

Research shows that the amount of conversation children experience during the first few years of life varies widely, creating an early talk gap.

Early language exposure, in particular interactive talk, is one of the strongest predictors of brain development.



A baby's brain develops rapidly between the ages of 0-3, building more than one million neural connections per second!

Capute, Shapiro, & Palmer, 1987; Gilkerson & Richards, 2008; Hart & Risley, 1999; Romeo et al., 2018; Noble et al., 2019

d'Apice, et al. 2019; Gilkerson et al., 2017; Weisleder & Fernald, 2013

### What do we do?

- Sharing stories, songs and Nursery Rhymes
- High Quality Interactions between children and adults
- Planned opportunities for talk and developing vocabulary
- Talk Partners



### What can you do?

#### What the science says about improving language and communication:

- Deliberately teaching vocabulary
- Back and forth conversations
- Sharing books - rocket fuel of vocabulary development

We know from research that the size of a child's vocabulary is the best predictor of success on future tests and children with a poor vocabulary at five are four times more likely to struggle with reading in adulthood and three times more likely to have mental health issues.

Law, J., Charlton, J., Asmussen, K. (2017). *Language as a Child Wellbeing Indicator*. Early Intervention Foundation/Newcastle University.

# The Nursery Day



- Settling time - Busy Fingers
- Register and Small Group Time
- Visual timetable to plan our day
- We choose our activities both indoors and outdoors
- PLAY, PLAY, PLAY!!
- Story Time
- Snack Time – milk and fruit and Snack Time Chat
- To finish we have rhymes and songs





# Adult Directed Activities

- Story Time
- Talk for Writing
- Foundation Phonics
- Story Sacks
- Maths
- Forest School
- Baking / Cooking
- Gardening
- JIGSAW PSHE Scheme
- Squiggle While You Wiggle



# Squiggle While You Wiggle





# Celebrations



- Birthdays are important events and we like to celebrate in school by singing and moving children's photographs on the birthday boards.
- We always share any special events or celebrations the children have experienced – Seesaw is perfect for sharing these with us.





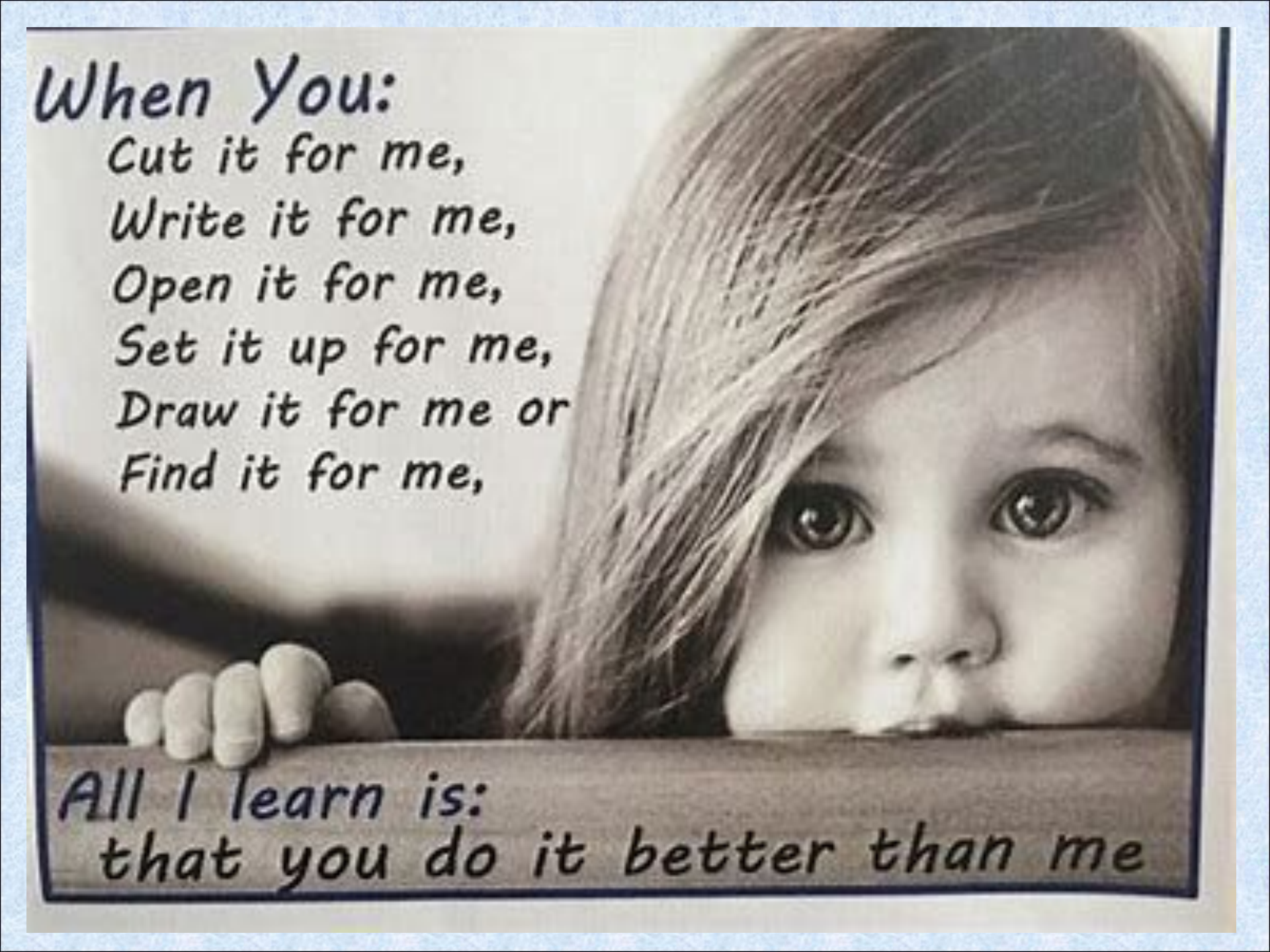
**Cookery**





# Forest School





*When You:*

*Cut it for me,  
Write it for me,  
Open it for me,  
Set it up for me,  
Draw it for me or  
Find it for me,*

*All I learn is:  
that you do it better than me*



# Encouraging Independence

**Read together every day  
and sing songs and  
Nursery Rhymes**

**Talk with your child -  
practising two way  
conversations**

**Big Play - climb,  
clamber, hang**

**Small Play - playdough,  
fiddly toys, construction**

**Play games - sharing,  
turn taking, counting**

**Mark making - drawing  
and colouring**

**Building Resilience - encourage them to try tricky  
things, explore risky play and not give in easily**

# How can you get your child ready for Nursery?

## Your child should be able to:

- Put on and take off their shoes independently
- Put on and take off their coat independently
- Manage clothes for toileting
- Go to the toilet by themselves
- Wash hands independently
- Peel and eat fruit like bananas and satsumas themselves
- Open lunch boxes and food pots

## Parents / Carers - please can you:

- Name EVERYTHING!
- Send in a water bottle each day
- Send a pair of wellies for your child to keep in school





Monkseaton Spa

Santa's Grotto at the Rising Sun



# Trips



Fun Little Foodies in Monkseaton

# Starting Nursery



- September start dates are staggered.
- Children will attend for either a morning, afternoon or a full day session (see your pack for details).

\* Some children may require a longer transition period which will be discussed with you if necessary.





## Welcome to Nursery

Name: \_\_\_\_\_

We are delighted to welcome you into Appletree Gardens First School Nursery. We have planned a number of sessions to support your child with their transition into our setting...

### Home Visit:

\_\_\_\_\_

This home visit will last for approximately 15 minutes and is the perfect opportunity for our staff to meet your child in their own, familiar environment. It is also a great chance for you to talk to the staff (the Nursery teacher and teaching assistant) and ask any questions you may have.

### Stay & Play Sessions with your child:

1. **Nursery Forest School - Thursday 11th July:** \_\_\_\_\_
2. **Nursery Classroom and Garden - Tuesday 3rd September:** \_\_\_\_\_

These sessions are for you and your child to meet the whole Nursery team and become familiar with their new classroom and environment.

Come to the **NURSERY GATE (not the main entrance gate)** and please be on time.

### Your child's first Nursery session will then be on:

\_\_\_\_\_

We encourage parents to say 'goodbye' at the door and staff will support the children to come into Nursery by themselves.

Your child will stay for the morning session on their first day and then for full days from the following day.

If we feel your child would benefit from a longer transition period, we will speak to you individually.

- **Important forms to fill in and have ready for your Home Visit:** Admissions form, 'Data and Local Visits' consent form and Early Years Pupil Declaration forms. A member of staff will also need to see your child's birth certificate to cross reference with the application form.
- **Sign up to Seesaw** - Sheet in pack with details. This will be the main way we communicate with parents.

**Please contact the school to confirm your attendance for the Home Visit, Forest School Stay and Play and Nursery Classroom Stay and Play**

We are really looking forward to meeting you and welcoming you to Appletree Gardens!  
Mrs Carron (Early Years Lead) and the Nursery Team



# Nursery Times



**Morning Session:** 8.45am – 11.45am (doors open 11:30am)

**Afternoon Session:** 12.30pm – 3.30pm (doors open 3:15pm)

## **Extra 15 hours of free childcare (30 Hours) for those eligible:**

- Those eligible will be offered an extra 3 hours of childcare per day.
- Lunchtime will be a separate session in our 'Wraparound' provision (located in Appletree Annex) and the children have access to a secure garden to play in after their lunch. Children will be collected from nursery at 11:30am and returned at 12:30pm.
- Children must bring a healthy packed lunch (no nuts, chocolate, sweets or fizzy drinks please).
- **There will be a small daily charge of £4 for this session.**





# Collecting Your Child

- Children are collected from the Nursery door at the end of the session.
- Please be on time.
- Staff need to be informed if a different person is collecting your child each day.
- 'Pickup Password'.
- Please introduce child minders / carers beforehand if possible.





# Medical Information



- Staff can only administer medicines which have been prescribed for your child.
- If you do have prescribed medication, you must complete a 'Medication Form'. This indicates the dosage and the frequency the medicine needs to be administered. These are available from the school office.
- Please advise us of any medical information and allergies relating to your child on the school admission form.





**Nursery Nativity**



# How can I keep in touch?

- **Main Office** - Absences and early collection messages must go to the main office.
- **Website** - Whole school information, curriculum coverage, school policies etc. year group pages.
- **Newsletter** - Whole school information and dates for your diary.
- **Parent Mail** - Reminders, for example; trips (text message and email).
- **Seesaw** - Share our learning and achievements, general messages or concerns (staff and parents).
- **Twitter** - Follow whole school events and celebrations [@Appletree\\_First](#) and the Nursery page [@AGFS\\_Nursery](#)



# Seesaw



Please sign up to Seesaw Family.

It is an excellent tool for communication and it allows us to share key moments in your child's learning journey.

You will find your code in your welcome packs.

More than one family member can sign up.







# How can I get involved as a parent/carer in Nursery?

## **Termly Drop In / Stay and Play Sessions:**

Maths, Literacy, Forest School, Mother's / Father's Day

## **Assemblies:**

Autumn Term - Christmas performance

Summer Term - Nursery Celebration Assembly

## **Trips:**

We try to arrange trips across the year to enhance our learning and these are only possible with the support of parents and carers.

# Appletree Childcare Provision - Out of School Club: Appletree Annex

- Breakfast Club
- After School Club
- Holiday Club
- 2 Year Old Provision  
(Little Pips)



**Susanne Cross – OOSC Manager**



# Out of School Club





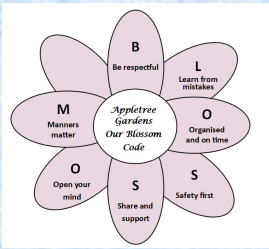
# P.T.A.

At Appletree we have an enthusiastic and pro-active P.T.A. who are always looking for new members!

Are you keen to get involved?

Follow our Facebook page:  
'Appletree Gardens First School PTA' for more information.





# How can we support you?

**On the door** - Staff are available to speak to both morning and afternoon while the doors are open.

**Supernanny** - We are delighted to have our own school nurse, Jane Crudace, working with us at Appletree. Nurse Lauren is Supernanny, Nanny McPhee and school health all rolled into one. She is available to work with parents on strategies to support a wealth of health and wellbeing issues. Lauren can also work directly with the pupils to support and identify needs with parental permission.

**SENDCo** - Ms Johnson is the Special Educational Needs Coordinator and leads on SEN provision at Appletree. If you would like to talk to Ms Johnson, please contact the school office to arrange a meeting.

**Early Help** - Early help is there to find out what is working well in your family and to build on your family's strengths and achievements. Early help is a way of getting extra support for your family as soon as possible when things happen. For more information please see [Early Help Leaflet](#)

**Thank you for joining us today.**

**We look forward to working in partnership with you and your child to ensure they settle into their new class and achieve their full potential.**

